

# Swaton Newsletter

February/March 2020





## Swaton Community Trust

### Regular Events



#### **TUESDAY – Craft Club – from 9.30am**

If you enjoy arts and crafts, then come along on a Tuesday morning and work on your project amongst friends. It's a great opportunity to share your knowledge or learn a new skill. For more details please contact Liz (421217).



#### **FRIDAY – Swaton Swiggers - 8.30pm**

With a good selection of wines, beers, soft drinks and snacks available at very reasonable prices the Friday night bar is an ideal place to meet friends & neighbours for a catch-up chat and it's only a short walk home.



#### **SATURDAY - Cafe– 9.30am - 12 noon**

Bacon rolls, sausage rolls, homemade cakes, tea and coffee.

Good excuse to sit a chat for a while with friends and neighbours.

Newspapers (available by pre-order only from Liz 421217).



#### **SATURDAY – Monthly Cinema Club 7:00pm**

First Saturday of the month (next on 7 March)

You'll find full details of the films being shown on display in the hut. Film and membership information can be obtained from Nicola Arnold (421566). Doors open 7pm, film starts at 7.30pm. Bar open and refreshments available.



## Swaton Community Trust

### Forthcoming Events

#### **60's DANCE NIGHT**

Saturday 29<sup>th</sup> February 2020 7.00pm

Come and dance the night away to the sounds of the 60s

Bar and supper, 60's dress code optional!

Tickets £6 including food or £2 dancing only!

Tickets and info from: Fiona: 07863123706 Nicki: 07905155359

#### **RACE NIGHT**

Saturday 14<sup>th</sup> March 2020 - 7pm

Enjoy a night at the races!

£2.50/person £1.50 for under12s (Ticket includes a hotdog)

Proceeds will go to *Sue Ryder Thorpe Hall Hospice*

Tickets from Liz 421217, Nicki 07905155359 or Richard 07976 371126

*To sponsor a race or a horse please contact Richard.*

#### **"BRAVE THE SHAVE"**

Friday 27<sup>th</sup> March 7pm

To raise money for the Maxillofacial Unit at Queens Medical Centre, Christine Loftus will have her head shaved!

Mr Laith Hussan Al-Qamachi and his fantastic team spent 10 hours in theatre saving the life of Chris's friend Pete and rebuilt his face – they did an amazing job and have worked tirelessly to ensure Pete and his family have had the support and aftercare needed. Chris would like to raise money for the Maxillofacial Unit to help them with lifesaving equipment to aid their incredible work.

Any donations would be gratefully appreciated, there will also be a raffle on the night so if you are able to donate a raffle prize, please contact Chris – 07812825655 or Nicki - 07905155359

Bar will be open too!



## Swaton Community Trust

### Forthcoming Events

#### QUIZ NIGHT

Saturday 28<sup>th</sup> March 2020 7.30pm

Teams of up to 6 players Tickets £8/person to include supper

Tickets from Liz 421217

#### GOOD FRIDAY FISH AND CHIP SUPPER

Friday 10<sup>th</sup> April 2020

(more details to follow)



## St Michael's Church

### Regular Events

Date	St Michael's Swaton	Time
9 February	Morning Praise	09:30
23 February	Holy Communion	09:30
8 March	Morning Praise	09:30
22 March	Holy Communion	09:30



## St Michael's Church

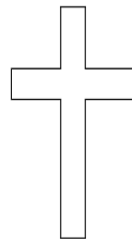
### Reverend Chris's Notes

The Rectory  
10 Cameron Street,  
Heckington  
NG34 9RW.

Email: [c.r.harrington@btinternet.com](mailto:c.r.harrington@btinternet.com)

With the church season of Epiphany having finished on 2<sup>nd</sup> Feb, we enter a three week season known as ordinary time before Lent begins with Ash Wednesday on 26<sup>th</sup> February. As Lent is traditionally known as a penitential season of fasting and study with the aim of putting away temptation and drawing close to God, the day before it starts is known around the world as Pancake Day or Fat Tuesday or Mardi Gras which is French for Fat Tuesday. It is a blow-out day. The last chance for over indulgence before the ritual of fasting begins on the Wednesday. In many parts of the world it's a carnival day. So get your frying pans at the ready to make those lovely pancakes. It is also known as Shrove Tuesday. Shrove come from the word Shrive "to absolve". As confessions would be heard by the priest in church who would then absolve the person and give them an act of penance to do, like going on a pilgrimage or doing some humbling work to do serving others or reading the scriptures and praying more regularly. In the church in this country it has become a season of study – doing a weekly Lent course on your own or with others to increase your knowledge of God and the Bible. In our group of parishes we will be running a Lent course based on the recent hit film 'The Greatest Showman which is loosely based on the life of circus owner PT Barnham

We will be showing the film in its entirety on 3<sup>rd</sup> March at 7pm at the Wesleyan Chapel in Heckington and then the course starts on Wed 4<sup>th</sup> March at 7pm and the five Wednesdays following. It picks up on the themes of hope, prejudice, disability, justice and faith. All are welcome. On Maundy Thursday on 9<sup>th</sup> April we will be holding a special Passover Supper at the Hut at 7pm as we look at the deeper meaning of our service of holy Communion through a Jewish perspective. More about that nearer the time.



Please Note - The regular service times at St Michaels Church Swaton are now 9.30am on both the second and fourth Sunday's of the month.

As these darker days become lighter at night, we pray the light of Christ burns brighter in the dark places of our world bringing hope and love and peace. Enjoy Fat Tuesday. The diet starts on Ash Wednesday.

Every blessing

Rev 'Captain' Chris  
Rector

**Out For Lunch** If you would like to join others from the Church community for lunch once a month at Swineshead on the A17, please contact Canon Beverley on 01529 461014. Lifts can be arranged if needed. Cost is approximately £10 for a meal and drink. The next 'Out for Lunch' is in February. All welcome.

**Swaton Fellowship Group** meets on a Wednesday evening. For more information contact Rachel and Bill on 01529 421148

**Men's Breakfast** The next Men's Breakfast Group meeting is on Saturday 15 February at 9am at the Old Bakehouse, Whitecross Lane, Burton Pedwardine, NG34 0DA. Contact Bill on 07841 741777



## Swaton Parish Council

### Notes from Last Meeting

1. **PLAY AREA.** One final piece of equipment, to be installed as soon as the weather permits, will complete the children's equipment for the play park. After a number of grants over the past few years, we have successfully purchased a variety of pieces. No further grants will be pursued. Weekly and monthly inspections have been arranged and an annual ROSPA inspection is being costed. Fencing around a section of the park will be completed as soon as possible.
2. **VILLAGE BOOK EXCHANGE.** There may be a village book exchange point in the village. This is a national scheme where small water tight containers are used to put books etc in and take them out. This is a free service to recycle books, magazines and DVD's. County Council permission has been obtained to place a post along the High Street. The Council is investigating whether a wooden unit can be obtained at no cost. This will be in addition to the books that are currently available, on the same basis, inside The Hut when it is open.
3. **SPEED SIGNS.** Speed signs are now in place at each end of Swaton. These show the speed of vehicles approaching the signs and also record the speeds of vehicles moving away from the signs. Various statistical details can be extracted from the signs and Councillors are looking at what will be most suitable for analysis.
4. **FLORAL APPROACHES.** Councillors are looking at planting daffodils and/or other suitable flowers at the village approaches. Ideas and costs will be brought to a future meeting.



Swaton Parish Council

Notes/Information

5. **BUDGET.** Swaton parish council has set their budget for 2020/21. Councillors agreed to request a sum of £2,750 from the District Council. This is an increase of £250, which will be just over £3 extra for Band D properties. The Budget covers wages, insurances, training, Hut rental, play area maintenance and annual inspection as well as miscellaneous stationery and administrative expenses.
6. **PLANNING.** The District Council granted planning permission for a holiday let at Smithy Farmhouse. The Parish Council had no objections to an application for the demolition of a conservatory and erection of a single storey rear extension at Church Farm.
7. **NEXT MEETING.** The next Parish Council meeting will be on Tuesday March 24<sup>th</sup> in The Hut. At 7.30pm there will be a public speaking session where members of the public may discuss items on the agenda so Councillors can be aware of any comments prior to the council meeting. The meeting will then start at 7.45pm, or earlier if public speaking ends sooner.

### Speed Indicators



The speed indicators have now been installed in the village. The indicators collect anonymised speed data (no registration numbers collected) on cars passing through the village. This will allow the Parish Council to assess the extent of the speed problems, to identify peak periods and to take appropriate further action.



## General Information

### Play Park



We now have 5 volunteers to cut the grass in the Play Park and cutting will commence in the Spring once the area has dried out.

The fencing around the football area will be finished when conditions permit.

The next piece of equipment (as below) is expected to be installed in February and should be ready for the summer months



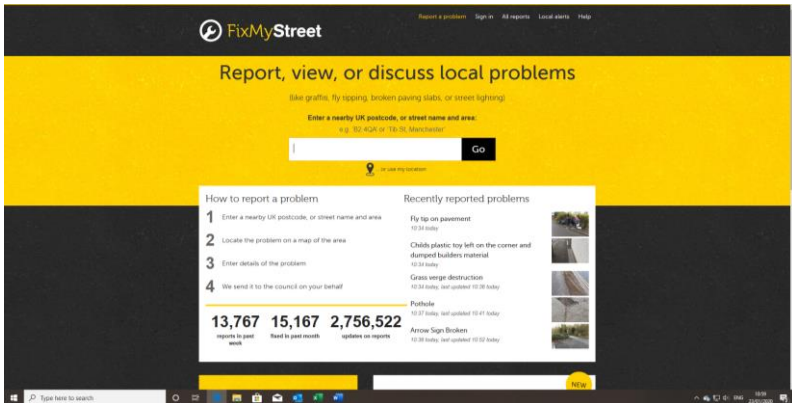
### VE Day 75<sup>th</sup> Anniversary Friday 8 May



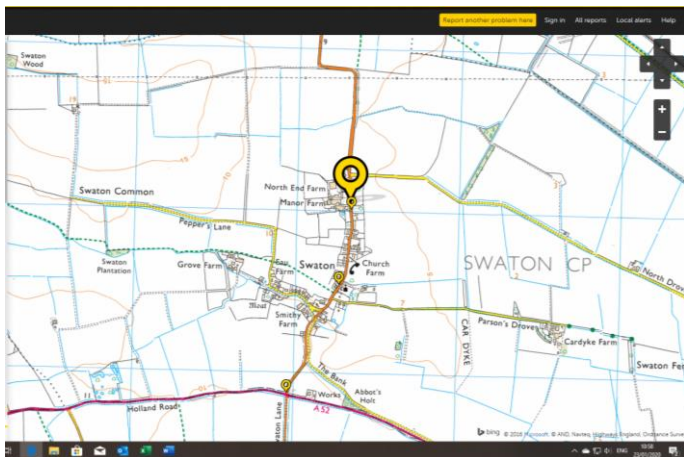
Friday 8 May 2020 is a bank Holiday to celebrate the 75<sup>th</sup> anniversary of VE Day. We are looking for suggestions on how the village might like to celebrate this day. Suggestions for Hut activities to Liz 421217, Nicki 07905155359 or Richard 07976 371126.

# General Information

## Fix My Street Website



County and district councils encourage the use of this website to report local problems such as broken signs, street lights not working and pot holes. The site is easy to use ([www.fixmystreet.com](http://www.fixmystreet.com)) Entering a postcode or place name, brings up a map showing reported items. New items can be added. Photos of the problem are strongly encouraged.



## Local Historical Society

My name is Alison Ray and I live in Aslackby. For several years now I have been a member of 2 local village history groups. Unfortunately, as everyone has such busy lives these days, both societies are struggling with continued membership and people willing to run them. As a volunteer for the Layers of History project run by Heritage Lincolnshire, I can see that there are a large number of people interested in the history of our area. In fact, one of their project areas was Aslackby, it's castle, manor house, and knights templar preceptory.

I have therefore thought that it may be nice to organise a historical society that, rather than focus on a particular village, covers a larger area. The area that immediately springs to mind is the Aveland Wapentake. It's an area that covers Dembleby, Osbournby and Swaton in the north, Pickworth, Kirkby Underwood and Hanthorpe in the West, Bourne in the south (though as Bourne has their own history society I would not include the town directly), and Dyke to Bridge End in the East. It would give a few large villages and a very interesting historical area. With the help of Heritage Lincolnshire, we are putting on an event in Aslackby on 8<sup>th</sup> February 2020 to not only show the results of the Layers of History work carried out in Aslackby but to springboard the idea of the new society.

### LOCAL HISTORY OPEN DAY

Aslackby Village Hall

Saturday 8<sup>th</sup> February 2020 12:30pm – 5pm

Come and discover the local history of the Aveland Wapentake

Activities throughout the afternoon including Children's games

Tea, coffee and cake

### EVENING TALK

Vikings! Take your weapons: The History of the Aveland Wapentake

With Jim Snee from Heritage Lincolnshire

6pm – 7:30pm, Aslackby Village Hall

HERITAGE LINCOLNSHIRE



## Councillors

Alan Wilson	wilson.alan.m@gmail.com	
Elaine Penketh	elainepenketh.swatonpc@gmail.com	
Charles Campion	charles.campion@btinternet.com	
Andrew Deptford	andrew@aadhire.com	
Gina Parsons	cloptoncottage@btinternet.com	
Judy Patrick	judy.patrick@btinternet.com	
Chris Richardson	chrisgrove@farming.co.uk	
Parish Council Clerk	shm McIntyre91@gmail.com	01400 262090
NKDC Councillor	Cllr_russell_jackson@n-kesteven.gov.uk	

## Medical Contacts

Emergencies	999
Non-emergencies (out of hours)	111
Millview Medical Centre	01529 406213
New Springwells Practice	01529 240234
Sleaford Medical Group	01529 303301
Grantham Hospital	01476 565232
Pilgrim Hospital	01205 364801
Lincoln County Hospital	01522 512512

## Police Contacts

Emergency Contact	999
Non-Emergency Contact	101
Constable Martin Green	01400 267485 07939 312651
PCSO Patrick Welby	01400 267485 07939 312792

## Church Contacts

Rev 'Captain' Chris Harrington	01529 460904
	07502 410798
Wardens Jill and John Abbott	01529 421278